

**Publisher:** Taylor & Francis

**Journal:** *Expert Review of Cardiovascular Therapy*

**DOI:** 10.1080/14779072.2018.1459185

**Review**

**Irreversible electroporation for the treatment of cardiac arrhythmias**

Alan Sugrue<sup>1</sup>, Elad Maor<sup>2</sup>, Antoni Ivorra<sup>3</sup>, Vaibhav Vaidya<sup>1</sup>, Chance Witt<sup>1</sup>, Suraj Kapa<sup>1</sup> & Samuel Asirvatham<sup>1</sup>

<sup>1</sup> Department of Cardiovascular Diseases, Department of Internal Medicine, Mayo Clinic, Rochester MN, USA

<sup>2</sup> Leviev Heart Center, Sheba Medical Center; Sackler School of Medicine, Tel Aviv University, Israel

<sup>3</sup> Department of Information and Communication Technologies, Universitat Pompeu Fabra, Barcelona, Spain

**Corresponding author:**

Samuel Asirvatham

Department of Cardiovascular Diseases, Mayo Clinic , 200 First Street SW, Rochester, MN 55905, USA

Phone: +1 507-293-3376

E-mail: [Asirvatham.Samuel@mayo.edu](mailto:Asirvatham.Samuel@mayo.edu)

**Abstract:**

**Introduction:** Cardiac ablation is an established treatment modality for the management of patients with cardiac arrhythmias. Current approaches to cardiac ablation employ thermal based energy to achieve lesions (damage) within the heart. There are many shortcomings and limitations of thermal based approaches. Electroporation (DC energy) is a non-thermal alternative approach to ablation has shown significant promise in animal studies.

**Areas covered:** An extensive review of the literature on the application of electroporation for ablation (both cardiac and collateral cardiac tissue) was undertaken. This review explores irreversible electroporation as a cardiac ablation modality. Specifically, it focuses and explains the biophysics of electroporation, the limitations of current thermal based approaches and examines the current data published on electroporation cardiac ablation.

**Expert commentary:** Electroporation is a fast-growing novel ablation modality that has many advantages over current thermal based approaches. Current research in animal models shows its can be safely and efficaciously applied to the heart. Although further research is required, electroporation represents an appealing option for the ablation cardiac arrhythmias.

**Keywords:** electroporation, DC energy, cardiac ablation, atrial fibrillation, ventricular arrhythmias

## 1.0 Introduction

Cardiac ablation has experienced a remarkable evolution over the last 50 years and established itself as a fundamental treatment strategy in patients with arrhythmias. The goal of cardiac ablation is to apply energy to destroy the underlying tissue and create a permanent lesion that is both transmural and contiguous. Despite over 30 years of research focusing on ablation energy sources, the reliable creation of effective and durable lesions remains challenging. Historically, the primary treatment of cardiac arrhythmias (in particular refractory arrhythmias) was sympathectomy[1] which evolved into surgical approaches (simple ventriculotomy[2], ligation[3] or electrocautery of AV node[4], cryosurgical ablation[5]) and then to the appealing “closed-chest” (transvenous) approach. Initially, the transvenous approach employed large Direct Current (DC) energy for the creation of lesions.[6, 7] Although successful, it was inconsistency with tissue damage, recurrence of arrhythmias, as well as significant barotrauma that stimulated research into alternative ablative energies and techniques and ultimately paved the way for radiofrequency (RF) energy.[8] RF energy has spawned the revolution of catheter ablation, its initial application and success in the treatment of supraventricular tachycardias with accessory pathways and preexcitation syndromes lead to its application in atrial flutter[9], atrial fibrillation[10, 11] and ventricular arrhythmias.[12] Today it is the most commonly used energy source.

While RF can produce ablation lesions effectively, most RF catheters deliver energy at a single point and therefore creating a contiguous line of these points can be difficult and time-consuming. Further, there is growing recognition of shortcomings and complications from RF, which are fundamentally a consequence of thermal heat generation and collateral damage. This has seen a growth and desire to find and test alternate energy approaches. In particular, there has been a renewed interest in the application of DC energy for ablation. When DC energy is applied in a pulsed fashion (typically short pulses), tissue is exposed to an electric field. Exposure to this electric field causes electroporation to occur by inducing the formation of nano-scale defects or pores which lead to the permeabilization of cells. Depending upon the settings of the field (e.g., pulse duration, voltage, etc) this can be reversible or irreversible (**Figure 1**). As seen in Figure 1 the application of the electric field is on a continuum, with greater applications promoting longer pore opening, and this can lead to irreversible cell death (ablation) by apoptosis (**Figure 2**).

Irreversible Electroporation (IRE) is a well-established treatment modality for solid tumors[13, 14, 15, 16] and is particularly alluring as a method for cardiac ablation when compared to RF approaches as it can create lesions without the consequences of thermal heating and preservation of surrounding

structures (nerves, vessels).[17] The application of IRE to cardiac tissue is an area of exponentially increasing interest and to date has been successfully applied to a range of cardiac tissues in animal studies. (Figure 3). In this review, we will explain the biophysics of electroporation, discuss the limitations of current thermal based approaches and examine the current data published on cardiac ablation with irreversible electroporation to provide insight into this novel, innovative approach.

## 2.0 Electroporation

### 2.1 What is electroporation?

Electroporation is a process in which a cell membranes permeability to ions and molecules is increased when the cell is exposed to high electric fields. Usually, these electric fields are applied in the form of short Direct Current pulses with an increase in cell permeability attributed to the formation of nanometric pores in the cell membrane, hence the term electro-poration.[18]. Depending upon the electric field applied, the effect of electroporation can be transient and result in viable cells after electric field exposure. In this case, the term reversible electroporation is applied. On the other hand, when the cells die due to prolonged electroporation, either because of permanent permeabilization leading to cell lysis or severe disruption of cell homeostasis during transient permeabilization, the term irreversible electroporation (IRE) is applied.

Electroporation is widely employed in many sectors, not only medical. In vitro, reversible electroporation is used for gene transfection of cells in culture[19] whereas IRE is applied for cold pasteurization of liquid media and has multiple other applications in food industry.[20] In vivo, tissue electroporation is the basis of numerous clinical treatment modalities. Reversible electroporation is the basis of electrochemotherapy[21], and it is also the basis of gene electrotransfer, which is used for multiple therapies under clinical trials, including cancer treatments and vaccination.[22] Irreversible electroporation (IRE) is an established non-thermal ablation method for treatment of solid tumors.

### 2.2 How does electroporation destroy (ablate) tissue?

At a cellular level, the initiation of electroporation depends on the cell transmembrane voltage (TMV), with electroporation occurring when the externally applied electric field (DC energy) induces a TMV that overcomes a cell's threshold. The threshold value depends on the characteristics of the electric field, in particular, this would be the number of pulses, frequency, duration and shape of the pulses, and on how electroporation is assessed (e.g., by noticing an increase of membrane electrical conductivity, by

detecting intracellular contents release or by observing cell lysis). Most authors report TMV threshold values in the range from 200 mV to 1 V.

Once this threshold is overcome and electroporation begins, cell membrane permeabilization occurs (through the formation of nanopores) and increases during the electric field exposure and rapidly drops after exposure cessation but, in cells, the permeabilization remains significantly high for seconds or several minutes. Actually, since this recovery stage (or resealing of the pores) has a duration several orders of magnitude longer than that of the field exposure (typically much shorter than a second), most passive transport of ions and molecules across the membrane occurs after the exposure rather than during the exposure.

It is worthwhile to note that different competing theories have been proposed to explain electroporation at the molecular level[23, 24]. No theory is unanimously accepted. In particular, disagreement exists regarding the nature of the cell membrane perturbation that allows an influx of molecules and ions long after electric field exposure. It has been proposed that large and stable hydrophilic pores are formed during the exposure and that those remain opened after.[18] However, some researchers disagree with this explanation.[23] Reported pictures of large pores obtained by freeze-fracture electron microscopy [25] are attributed to artifacts of the technique[23]. Nevertheless, it must be noted that recent studies based on molecular dynamic simulations indicate that, after establishing the required TMV, aqueous pores are created in the lipid bilayer in a few nanoseconds[26] or less[27], provide convincing evidence that pores are the most probable mechanism of the initial membrane perturbation.

As mentioned, if the electric field exposure is prolonged this can lead to irreversible electroporation and cell death. The exact mechanism of death in electroporation is unknown, and the reports on the pathways that lead to cell death are somewhat contradictory.[28] It is commonly accepted that tissue destruction by IRE with microsecond, and longer pulses are predominantly necrotic.[29] On the other hand, other studies have also found evidence of apoptotic death.[30, 31] Interestingly, a recent experimental study with short (2  $\mu$ s) pulses suggests that tissue damage is predominantly apoptotic at low electric field magnitudes whereas it is primarily necrotic at high field magnitudes.[32] In the case of sub-microsecond pulses, with the delivery of so-called nanosecond pulsed electric fields (nsPEFs), it appears that cell death is predominantly apoptotic.[33] In addition to direct electroporation effects on the cells that can lead to their death, it must be contemplated the possibility of indirect effects. One of

those effects may be ischemia. It has been indicated that ischemia may be a possible mechanism of cell damage in electrochemotherapy and IRE due to microvasculature disruption.[34]

### *2.3 Is electroporation non thermal?*

Electric power is always dissipated as heat at any conductor. This is known as *Joule heating*, but it is also referred to as *ohmic heating* or *resistive heating* because of its relationship with Ohm's law. If one was to provide a single pulse of 100  $\mu$ s at a magnitude of 1000 V/cm, the maximum temperature increase that must be expected to occur in living tissues is about 0.36 °C.[35] For 2000 V/cm, the maximum increase would be about 1.44°C. Such increases in temperature are unlikely to produce any thermal effects on tissue considering the threshold for thermal injury is reported at 50°C. However, since IRE typically requires a series of those pulses not a single pulse, thermal damage may occur.[36] This issue was addressed in detail by Davalos when they first proposed IRE as an ablation method[37] with the main conclusion that non-thermal IRE was feasible. Of note, since Joule heating depends on the square of the electric field magnitude, field heterogeneities have a significant impact on heating. As a consequence, high electric fields around thin needle electrodes or at the edges of flat electrodes are likely to cause localized thermal burns[36, 38]. That said, the consensus is that IRE ablation is mostly non-thermal and that has prompted its emergence as a distinctive ablation method.

### *2.4 How can we create electric fields for electroporation?*

Except recently reported studies indicating the possibility of performing electroporation by magnetic fields[39, 40] and radiated electromagnetic waves[41], the electric field required for electroporation is delivered by applying high voltages or currents across electrodes within or in contact with the tissue.

For simple electrode arrangements or idealizations of those arrangements, it is possible to find analytical expressions to calculate the field distribution.[42] However, in most cases, the use of numerical methods to simulate the electric field in computers is required. The IGEA and AngioDynamics systems described below are accompanied by basic software tools that allow predicting the treatment regions for some electrode arrangements under the assumption of tissue homogeneity. However, these tools are far from being patient-specific treatment planning platforms. Some efforts are being conducted towards the development of treatment planning tools similar to those used in radiotherapy.[43]

Currently, the only commercial generator intended for clinical IRE is the AngioDynamics NanoKnife™ ablation system. Other clinical systems designed for electrochemotherapy, such as the IGEA Cliniporator™, potentially can be used for IRE because they produce similar voltage signals. These devices can generate pulsed voltages up to 3000 volts. In essence, these systems are based on slowly charging at high voltage a capacitor and then partially discharging it, in a controlled manner, through the electrodes and the tissues.[44]

Defibrillators have been the mainstay IRE generators in studies of cardiac ablation. It must be noted, however, that defibrillators are not optimized for IRE. Instead of generating a sequence of short pulses, defibrillators generate a single relatively long pulse of a few milliseconds (compared with micro or nanoseconds), which is less effective for IRE and more likely to cause thermal damage (**Figure 1**) and arcing issues. Further, typically defibrillators do not control the applied voltage, but the total applied energy, which is likely to impact repeatability and reproducibility negatively.

### *2.5 What are the typical electroporation (electric field) settings used in clinical practice?*

To create cell death, a typical IRE protocol consists in a series of 100 DC energy pulses of 100  $\mu$ s at frequencies from 0.1 Hz to 10 Hz. For this sort of protocol, the field magnitude threshold for IRE in tissues is in the range from 0.5 kV/cm to 2.5 kV/cm, depending on the tissue and how tissue damage is assessed.[45] It is worth mentioning that electroporation efficacy does not seem to be directly related to the amount of delivered energy or charge. For instance, two 100  $\mu$ s pulses of 1000 V/cm will be much more effective for IRE than a single pulse of 200  $\mu$ s with similar energy and charge.

## **3.0 Current thermal energy modalities for ablation: shortcomings and limitations**

In essence, the goal of catheter ablation is the destruction of cardiac tissue coupled with the creation of a durable, transmural and contiguous lesion. There is a multitude of ablative energy sources available in clinical practice including RF, cryothermal, microwave, ultrasound and laser. Clinical experience and success with each of these energy modalities vary with the greatest experience with RF energy.

### *3.1 Radiofrequency*

RF is the most commonly used energy source and, while largely efficacious; RF has a multitude of significant shortcomings and limitations. Application of RF energy to tissues results in thermal ablation

through resistive heating of the tissue with subsequent heat conduction to deeper tissue layers. Successful ablation lesion creation relies on a multitude of factors; contact force (CF), power, impedance, temperature, duration. [46, 47] [48, 49] The proximity of the posterior atrial wall to the esophagus makes it a potential site of thermal injury. Thermal injury can cause ulceration formation or the creation of an atrial-esophageal fistula - a devastating consequence that is often fatal.[50, 51] Further concerns include collateral injury to phrenic nerve[52] as well as the vagus nerve and its branches.[53]

Coagulation and tissue necrosis induced by thermal energy in RF is associated with a risk of thrombus formation. In atrial ablations, the reported incidences of TIA and stroke are of 0.2% and 0.3%[54] and increase further when RF ablation is performed in systemic cardiac chambers (1.8% to 2.0%) and for ventricular arrhythmias(2.8%).[55] Although there has been a reduction in periprocedural TE events with the introduction of open-irrigated catheters and the use of early and aggressive heparinization, there is growing concern for silent cerebral infarcts/lesions and the long-term consequences of these.[56] Silent infarcts assessed by brain MRI have shown to be associated with dementia and cognitive decline.[57]

### *3.2 Cryothermal ablation*

The mechanism of cryothermal ablation is contrastingly different to RF, as cryothermal aims to remove heat from tissues thereby lowering molecular movement and stored kinetic energy, which results in tissue cooling and ice formation.[58] Unlike RF ablations catheters, cryocatheters come in two forms: traditional tip ablation catheters used for focal ablation and expandable balloon for PV isolation. Cryothermal ablation, like RF, is also associated with significant complications including esophageal fistula[59], PV stenosis[60, 61], phrenic nerve palsy[62, 63], and potential lung hemoptysis[64, 65].

### *3.3 Microwave*

Microwave energy is less commonly use and still undergoing clinical investigation. Therefore data is limited compared to RF and cryothermal. The source of heat for ablation is electromagnetic radiation – when high-frequency electromagnetic radiation stimulates the oscillation of dipolar molecules (water molecules) at high speed. This speed of vibration creates friction between water molecules that result in heat formation. Thermal lesion development results from radiant heating, and therefore there is no requirement for catheter contact. Moreover, microwave radiation is not absorbed by blood and has the benefit of limited heating of endocardial surface thereby limiting coagulum formation.[66] Initial results



with this energy have shown good penetration depth with delivery not limited to electrode size and contact.

### *3.4 Ultrasound*

High-intensity Ultrasound can be applied to cardiac tissues both surgically and endocardially and causes injury by two mechanisms; thermal and mechanical energy.[67] Ultrasound does not require direct contact with the myocardium. Its fundamental capability of enabling focusing and minimization of collimation enables directed therapy towards distant deep tissue without collateral damage particularly the coronary arteries.[68] The ability to perform ablation on deep tissue is valuable for VT ablation.[69] Although upfront an attractive option it has had issues since its first inception, particularly in AF ablations (endocardial approaches) and at present is not safe for everyday clinical use.[70]

### *3.5 Laser*

Laser ablation produces a vibrational excited state in molecules and can be delivered in a continuous or pulse mode to create tissue heating and lesion formation. Ablation is performed with a 980-nm diode laser, housed in the central lumen. While there were limitations with the 1<sup>st</sup> generation design, in particular compliance, and thrombus formation[71], the second generation design was more compliant with a bloodless interface[72] Generally, initial results have shown success however like most of the thermal energies efficacy still relies largely on good contact.[73]

## **4.0 Electroporation: overcoming thermal-based limitations and shortcomings**

As discussed, there is a multitude of concerns with thermal based approaches in cardiac ablation. Based upon current animal studies to date, Electroporation offers a unique approach which addresses and avoids these limitations (Table 1).

### *4.1 Contact*

The need for contact is a major limitation of RF, Cryoablation, and Laser. Although most data has employed a contact based approach for testing, preliminary animal data suggests that electroporation does not require direct contact with the destruction of cardiac conduction system and myocardium distant to the cardiac delivery catheter. [74]

#### *4.2 Limited collateral damage*

Electroporation can provide a targeted approach that can result in minimal collateral damage, truly making it a very appealing option. Remarkably electroporation has been shown in animal models not to injure the phrenic nerve, esophagus or coronary arteries – major concerns with thermal based approaches. [75, 76, 77]

#### *4.3 Thrombus formation*

Based upon preliminary animal data, it does not seem that electroporation causes significant thrombus

#### *4.4 Efficiency*

Other thermal ablation methods can be time-consuming, particular RF. Electroporation can be applied quickly, often in a few secs.

#### *4.5 Tissue Specificity*

A unique feature of electroporation is that for a specific tissue and a specific set of electric field features (e.g., number of pulses, frequency, duration and shape of the pulses); it is possible to define an electric field magnitude threshold for achieving reversible electroporation and, a higher one, for irreversible electroporation. How best to target the desired tissue by the manipulation of these parameters still needs to be studied. This enables treatment planning for electroporation-based treatments.[78] This is invaluable in the world of cardiology as unlike current other ablation therapies, except cryotherapy, reversible electroporation could test and ensure one is correctly targeting the arrhythmogenic substrate before permanently (irreversibly) affecting the tissue.

#### *4.6 Lesion homogeneity*

To date, histological evidence from animal studies suggests that IRE can produce homogenous cardiac lesions. Lesion homogeneity is likely a function of both the electric field (i.e., strength, direction, pulse width, pulse shape) and underlying tissue properties when exposed to this field. As more research is performed, further information will enable these initial observations to be confirmed.

## 5.0 Current use of cardiac irreversible electroporation

As mentioned, the first experience with the application of DC energy was in the 1980s however there were significant complications from arcing and barotrauma from both a catheter and defibrillator that were not designed for effective IRE ablation. Since this time there has been significant advancement in both technology (such as catheter design and electroporation delivery tools) and understanding (such as the impact of field manipulations) that has made IRE an appealing ablation modality. As highlighted in **Figure 3**, it has many potential applications including, pulmonary veins cardiac muscle, Purkinje fibers and cardiac ganglia.

### 5.1 Cardiac tissue

The spark that spurred the revival of electroporation as a potential ablation energy source occurred in 2007, where IRE was successfully tested surgically as a method to perform epicardial atrial ablation.[79] In this study, the right and left atrial appendages were ablated with subsequent gross histological analysis showing a clear demarcation line between ablated and normal tissue. It was further noted, there was no charring and histology showed complete transmural destruction of atrial tissue at the site of the electrode application. Hong furthered these initial findings in 2009 when he applied electroporation epicardially at multiple locations in the heart and showed that many of the ablation lesions were transmural ( a key element to an effective ablation lesion).[76]

On the foundation of this, Wittkamp[80] in the pursuit of a better energy modality for AF ablation applied electroporation directly to pulmonary vein ostia. At this time the recognition of the limitations of RF ablation was growing, particularly regarding pulmonary vein stenosis (a consequence of direct RF application to the PV ostia). His results remarkably not only demonstrated safety but showed a lack of histological changes associated with PV stenosis after three weeks that would be expected in RF ablation. These results were subsequently further validated in a long-term study using RF energy as a comparator.[81] Our group has also shown that we can delivery DC energy directly to the pulmonary veins without any stenosis.[82] Wittkamp further examined the relationship between delivered energy and lesion size by application of IRE to the myocardium epicardially and proposed that lesions deep enough for electrical PV isolation potentially could be created with a single 200J application of a few milliseconds in duration.[83]

As discussed above, RF energy cannot be applied to coronary arteries without significant consequences. Both du Pré[84] and Neven[75] published both short term and long term data (respectively) on the

safety of electroporation over coronary vessels and reported that no short-term (3 weeks) or long-term (3 months) luminal narrowing was seen. Further, deep myocardial lesions were created without the cost of major damage to the coronary arteries and notable advantage over current RF energy.

Zager[85] meticulously evaluated for a graded effect of different electroporation protocols on in vivo myocardial tissue. Results from their study showed IRE has a graded effect on the myocardium and that the extent of ablation can be controlled by changing pulse length, frequency and number, as well as by changing electric field intensity. Ultimately, greater field strength (voltage) and longer pulse duration resulted in greater myocardium ablation. More recently our group has published data on a novel prototype catheter that can perform IRE in pulmonary veins/atrial tissue.[86] All our treated pulmonary veins showed marked EGM amplitude reduction (61.2% on average) with all lesions transmural and histological analysis showing loss of cardiomyocytes with preserved structural collagen. Further, there was no significant PV stenosis detected on either CT scan or histology.

### *5.2 Esophageal*

Esophageal injuries are a major concern in thermal approaches to cardiac ablation, particular when ablations are performed on the posterior wall of the atrium. There has been a drive in innovative devices and procedural techniques in an attempt to minimize this with varied results.[87, 88] Electroporation treatment is advantageous in that it has been shown in preliminary studies not to injury esophageal tissue both directly when applied to the esophagus and indirect through ablation in the left atrium. Hong[76] targeted the esophagus directly with electroporation and showed in contrast to RF ablation which compressed the esophageal wall and destroyed the epithelial, muscular layers, and the adventitia the IRE lesions were restricted to the muscle layer with the luminal epithelial layer and the delicate Lamina muscularis mucosae left without pathological changes. This was further validated by Neven[89] who showed that esophageal architecture remains unaffected two months using an energy level capable of creating  $\approx$ 7-mm deep lesions.

### *5.3 Autonomics/nerves*

Electroporation has also shown to have beneficial outcomes in relation to nerve damage. Outside of the cardiac field, the results of nerve sparing with electroporation have been largely positive, particularly in local treatment of tumors bordering nerves. Early studies showed no effect on the neurovascular bundle of canine prostates[90], which was supported by subsequent studies.[91, 92] However some studies have demonstrated axonal injury in the sciatic nerves with full recovery within seven weeks.[93, 94]

Regarding specific cardiac studies there is limited but early positive data, Neven showed that electroporation ablation applied at an energy level to created myocardial lesions did not damage histological or functionally of the phrenic nerve.[77]

The heart is richly innervated by autonomic nerves and activation of the autonomic nervous system (ANS) has been implicated in the genesis and propagation of AF[95]. Modulation of the ANS by targeting cardiac ganglionated plexus (GP) with endocardial ablation [96, 97] or surgical approaches [98, 99] has shown some benefit in AF treatment. However, as the GP are located predominantly in the fat pads on the epicardial surface of the heart, current approaches involve either significant invasive surgery or extensive endocardial ablation which can cause unnecessary myocardial damage. Our group has highlighted that GP electroporation is feasible and safe, with electroporation at 500–5,000  $\mu\text{A}$  is moderately effective in abolishing the response to local application of acetylcholine and results in less atrial myocardial injury compared to RF.[100] Further data by our group (unpublished) confirms these findings and shows augmentation with the addition of Botox. Further, we have also shown (unpublished) that electroporative ablation is sustained and has minimal collateral damage.

#### *5.4 Vessels*

Direct application of radiofrequency ablation to cardiac vessels presents significant limitations. On the other hand, IRE by DC pulses has shown considerable promise in this regard, and it has been a topic led largely by the work of Maor[101, 102, 103, 104]. The effects of IRE were studied on the carotid artery or the iliac artery, with all studies showing that the connective matrix of the blood vessels remained intact and the number of vascular smooth muscle in the arterial wall decreased with no evidence of an aneurysm, thrombus formation or necrosis. Although further work is needed, these studies are preliminary indicative of the safety of treatment concerning the application of IRE near blood vessels.

#### *5.5 Purkinje fibers*

Purkinje system has been implicated in the genesis of primary VF[105, 106], with ablation of focal Purkinje triggers successfully treating the arrhythmia.[106, 107] Preliminary data from our group has shown the ability to manipulate the electric field to acutely eradicate Purkinje potentials without significant injury to the underlying myocardium.[108]

## 6.0 Electroporation challenges

Based upon current animal studies to date IRE is a cardiac ablation modality that has unique features which suggest the potential to be advantageous over current thermal based approaches. That said, there are several challenges facing this technology before it fulfills its promise and is adopted as the preferred cardiac ablation energy source in the clinical setting.[109]

### 6.1 Device design and innovation

IRE technology poses novel challenges for device design. The ideal ablation modality must be compatible with catheters in a wide variety of configurations and possess steerability, which will permit energy delivery to a variety of intra and extra-cardiac anatomical structures. The currently available irrigated and non-irrigated catheters may not be ideally suited for electroporation delivery. Catheters designed specifically for electroporation are under development, with models including circular epicardial, linear epicardial, and balloon endocardial devices.[82, 110] Further research into the impact of catheter diameter, geometry and profile will help design electroporation catheters of the future. The electric field intensity may vary with differences in catheter size and tip configuration (flat plate-like versus linear), and a better understanding of the electroporative capabilities of these will allow us to exploit these differences for clinical use.[111]

A dedicated generator system that can perform a wide range of electric field intensities and pulse width durations will allow flexibility and dose titration of energy delivery. Current cardiac IRE research involves a wide range of energy sources from adapting FDA approved technology (NanoKnife™) to using external defibrillators.[86, 112], There exists a need for a concerted effort to develop generators capable of DC energy delivery across a wide range of voltage and pulse width duration; and the ability to power multiple catheters simultaneously. Ease of integration with currently available electroanatomic mapping and signal processing systems will assist in the adoption of IRE in contemporary labs.

### 6.2 Avoiding muscle and nerve stimulation

IRE protocols typically consist of series of direct current (DC) pulses with lengths ranging from 10  $\mu$ s to 100  $\mu$ s. Unless preventive measures are taken, these pulses are likely to cause acute pain and strong muscle contractions due to the capture of nearby efferent and afferent nerves. This is particularly relevant when monopolar electrode configurations are attempted due to the wider “antenna” inherent to monopolar stimulation.[113]

A commonly used workaround includes administration of local and general anesthesia along with muscle relaxants or neuromuscular blockade.[114] This leads to an increase in the complexity of the whole clinical procedure that may limit the applicability of electroporation-based treatments. To overcome this drawback, Davalos proposed a novel IRE pulsing protocol consisting of bursts of short (1  $\mu$ s to 5  $\mu$ s) bipolar square pulses.[32, 114] This protocol, labeled High-Frequency Irreversible Electroporation (H-FIRE), very substantially reduces muscle contractions, hence preventing the need for neuromuscular blockade. However, this protocol has not been studied for cardiac ablation.

### *6.3 Risk of ventricular fibrillation*

Another adverse consequence of electroporation delivery is the risk of triggering ventricular fibrillation (VF) or other cardiac arrhythmias.[115] Fortunately, a solution was envisioned quite early in the field of electrochemotherapy: pulses can be synchronized with the electrocardiogram (ECG) signal so that they are delivered when all myocardium cells are in the absolute refractory period. Currently, all IRE treatments near the heart are delivered with ECG synchronization. This was concluded to be a safe procedure.[116]

### *6.4 Collateral heating*

The tissue temperature required for thermal ablation is estimated at 50 degrees Celsius based on prior in vivo data.[117] As discussed previously, the Joule heating effect caused by IRE is considered to be negligible based on mathematical modeling.[118] Inferential data from in vivo experiments using conventional or specially designed IRE catheters suggests the absence of thermal ablation.[119]

In contrast, in vivo experiments with needle electrodes demonstrate significant Joule heating effects at extremes of electroporation settings.[120] Mathematical modeling as well as in vivo experiments by van Gemert et al. also found evidence of tissue temperatures exceeding 50 degrees Celsius.[121] Furthermore, esophageal temperatures much lower than 50 degrees Celsius and as low as 40 degrees Celsius are associated with the formation of esophageal ulcers, a precursor to atrioesophageal fistula, after atrial fibrillation ablation.[122] Direct measurement of tissue temperature while utilizing contemporary cardiac IRE protocols has not been performed. In vivo data studying multiple configurations of catheters coupled with different field strengths and pulse widths are critical to the identification of Joule heating thresholds and could determine non-thermal thresholds for cardiac electroporation.

## 7.0 Conclusion

Cardiac ablation is an established and important pillar in the treatment of patients with cardiac arrhythmias. Current approaches to ablation rely on thermal energy to create lesions, with RF the most popular modality. While thermal ablation overall is reasonably effective, it harbors significant limitations and complications. In particular, dependence on contact for effective lesion creation, collateral damage to nerves, myocardium, and blood vessels as well as thrombus formation raises the risks and complications associated with thermal ablation. Electroporation offers a non-thermal ablation strategy which has the potential to solve these issues, but further human clinical studies are required. Current animal data on irreversible electroporation shows significant promise for cardiac ablation should we address the challenges it faces.



## **8.0 Expert commentary**

Evolution and innovation in cardiac ablation, particular regarding ablation energy modalities, tracks a truly remarkably course over the last 50 years. Today, radiofrequency (RF) is the most applied energy modality, but its significant limitations and shortcomings fuel the search for a superior modality. Attempts with other modalities to improve ablation risks and outcomes, such as with microwave and laser, have been somewhat unsuccessful to date, as they not been able to achieve the same efficacy and safety as RF. The primary concern with currently available energy modalities is the dependence on and consequences of thermal energy for lesion formation, which causes many complications, including collateral damage and thrombus formation. The ability to ablate with a non-thermal ablation modality would be paradigm shifting.

Irreversible electroporation is a non-thermal cardiac ablation modality that shows true promise. With alluring results from preclinical studies to date. Early results are optimistic, and early studies show an excellent safety profile with limited reported adverse events (which bodes well for future human use ). As summarised in table 2 at present a large majority of cardiac IRE is based upon acute models; there is a need to increase chronic studies to examine the long-term effects of IRE with a particular focus on the durability of lesions and untoward effects on cardiac muscle and function. While further chronic studies are needed, before IRE can be truly established in human practice there are some challenges which need to be addressed (as discussed in the article). One particular challenge, which we feel is extremely important, is the development of a method to reduce or involve no pain with the delivery of IRE. Traditional IRE protocols, especially in the tumor field, require general anesthesia and deep muscle relaxants to limit muscle contractions during delivery. Techniques to circumvent this are been developed like nanosecond pulses or H-FIRE, but research with these techniques for cardiac ablation is sparse to date. Further studies are required in this regard.

Additionally, as cardiac innovation with IRE cultivates; we envisage translation of cardiac-based designs to tumor treatments, particularly balloon based designs. At present many of the tumor approaches are percutaneous – the experience with balloons in the cardiac IRE field may open up new horizons for transvenous tumor treatments.

## **9.0 Five-year view**

In the next five years, as there is continued drive and innovation in the field of electrophysiology, there will be constant growth, application and understanding of irreversible electroporation (IRE) as an ablation modality. The major improvement we envisage is the development of IRE protocols for tissue specificity and the application of new IRE techniques to reduce muscle contraction. Further, we hope to see IRE employed in clinical trials (humans) as an AF ablation modality and close to application for the treatment of ventricular arrhythmias.

## 10.0 Key issues

- Electroporation is a process in which a cell membranes permeability to ions and molecules is increased when the cell is exposed to high electric fields. Usually, these electric fields are applied in the form of short Direct Current pulses. This effect can be reversible or irreversible and lead to cell death.
- Irreversible electroporation is an established ablation modality in solid tumors and has growing interest as cardiac ablation tool.
- Current approaches to cardiac ablation employ thermal energy, and although reasonably efficacious, thermal heat has significant drawbacks including thrombus formation, collateral damage, and the reliance on contact.
- Irreversible electroporation offers many advantages over current thermal based approaches; most importantly it is nonthermal, avoids collateral damage and can target specific tissue (tissue specificity).
- Early preclinical data shows significant promise of IRE as an ablation modality with an attractive safety profile.

**Funding**

This paper was not funded.

**Declaration of interest**

The authors have no relevant affiliations or financial involvement with any organization or entity with a financial interest in or financial conflict with the subject matter or materials discussed in the manuscript. This includes employment, consultancies, honoraria, stock ownership or options, expert testimony, grants or patents received or pending, or royalties. Peer reviewers on this manuscript have no relevant financial or other relationships to disclose.

## References

*Papers of special note have been highlighted as:*

*\* of interest*

*\*\* of considerable interest*

1. Wilkinson HA, Bryant GD, Orgain ES. The supraventricular tachycardias. Management by interruption of cardiac sympathetics. *Jama*. 1961 Feb 25;175:672-6. PubMed PMID: 13785324; eng
2. Gallagher JJ. Surgical treatment of arrhythmias: current status and future directions. *Am J Cardiol*. 1978 May 22;41(6):1035-44. PubMed PMID: 352123; eng
3. Garcia R, Arciniegas E. Recurrent atrial flutter. Treatment with a surgically induced atrioventricular block and ventricular pacing. *Archives of internal medicine*. 1973 Nov;132(5):754-7. PubMed PMID: 4750228; eng
4. Edmonds JH, Ellison RG, Crews TL. Surgically induced atrioventricular block as treatment for recurrent atrial tachycardia in Wolff-Parkinson-White syndrome. *Circulation*. 1969;39(5S1):I-105-I-111.
5. Harrison L, Gallagher JJ, Kasell J, et al. Cryosurgical ablation of the AV node-His bundle: a new method for producing AV block. *Circulation*. 1977;55(3):463-470.
6. Gallagher JJ, Svenson RH, Kasell JH, et al. Catheter technique for closed-chest ablation of the atrioventricular conduction system: a therapeutic alternative for the treatment of refractory supraventricular tachycardia. *New England Journal of Medicine*. 1982;306(4):194-200.
7. Ward DE, Davies M. Transvenous high energy shock for ablating atrioventricular conduction in man. Observations on the histological effects. *Heart*. 1984;51(2):175-178.
8. Olgin JE, Scheinman MM. Comparison of high energy direct current and radiofrequency catheter ablation of the atrioventricular junction. *Journal of the American College of Cardiology*. 1993;21(3):557-564.
- \* This paper was the first randomized control trial to compare direct current with radiofrequency (RF) and provided the impetus for the domination of RF which we have seen over the last few decades
9. Calkins H, Leon AR, Deam AG, et al. Catheter ablation of atrial flutter using radiofrequency energy. *The American journal of cardiology*. 1994;73(5):353-356.
10. Swartz J. A catheter-based curative approach to atrial fibrillation in humans. *Circulation*. 1994;90:I-335.
11. Haissaguerre M, Gencel L, Fischer B, et al. Successful catheter ablation of atrial fibrillation. *Journal of cardiovascular electrophysiology*. 1994 Dec;5(12):1045-52. PubMed PMID: 7697206; eng
12. Gonska B, Brune S, Bethge K, et al. Radiofrequency catheter ablation in recurrent ventricular tachycardia. *European heart journal*. 1991;12(12):1257-1265.
13. Martin RC, McFarland K, Ellis S, et al. Irreversible electroporation in locally advanced pancreatic cancer: potential improved overall survival. *Annals of surgical oncology*. 2013;20(3):443-449.
14. Paiella S, Butturini G, Frigerio I, et al. Safety and feasibility of Irreversible Electroporation (IRE) in patients with locally advanced pancreatic cancer: results of a prospective study. *Digestive surgery*. 2015;32(2):90-97.

15. Valerio M, Stricker PD, Ahmed HU, et al. Initial assessment of safety and clinical feasibility of irreversible electroporation in the focal treatment of prostate cancer. *Prostate cancer and prostatic diseases*. 2014;17(4):343.
16. Scheffer HJ, Nielsen K, de Jong MC, et al. Irreversible electroporation for nonthermal tumor ablation in the clinical setting: a systematic review of safety and efficacy. *Journal of Vascular and Interventional Radiology*. 2014;25(7):997-1011.

\*\* Important publication nicely reviewing and outlined safety and efficacy data of IRE for tumor ablation.

17. DeSimone CV, Kapa S, Asirvatham SJ. *Electroporation: past and future of catheter ablation*. Am Heart Assoc; 2014
18. Weaver JC, Chizmadzhev YA. Theory of electroporation: A review. *Bioelectrochemistry and Bioenergetics*. 1996;41:135-160. doi: 10.1016/S0302-4598(96)05062-3. PubMed PMID: 10465736;

\*\*An outstanding book which explores the theory of electroporation and provides essential background information.

19. Neumann E. Membrane electroporation and direct gene transfer. *Bioelectrochemistry and Bioenergetics*. 1992;28:247-267. doi: DOI: 10.1016/0302-4598(92)80017-B.
20. Barba FJ, Parniakov O, Pereira SA, et al. Current applications and new opportunities for the use of pulsed electric fields in food science and industry. *Food Research International*. 2015;77:773-798. doi: 10.1016/j.foodres.2015.09.015.
21. Mali B, Jarm T, Snoj M, et al. Antitumor effectiveness of electrochemotherapy: A systematic review and meta-analysis. *European Journal of Surgical Oncology*. 2013;39:4-16. doi: 10.1016/j.ejso.2012.08.016. PubMed PMID: 22980492;
22. Heller R, Heller LC. Gene Electrotransfer Clinical Trials. *Advances in Genetics*. 2015;89:235-262. doi: 10.1016/bs.adgen.2014.10.006. PubMed PMID: 25620013;
23. Teissie J, Golzio M, Rols MP. Mechanisms of cell membrane electropermeabilization: A minireview of our present (lack of ?) knowledge. *Biochimica et Biophysica Acta - General Subjects*. 2005;1724:270-280. doi: 10.1016/j.bbagen.2005.05.006. PubMed PMID: 15951114;
24. Chen C, Smye SW, Robinson MP, et al. Membrane electroporation theories: A review. *Medical and Biological Engineering and Computing*. 2006;44:5-14. doi: 10.1007/s11517-005-0020-2. PubMed PMID: 16929916;
25. Chang DC, Reese TS. Changes in membrane structure induced by electroporation as revealed by rapid-freezing electron microscopy. *Biophysical Journal*. 1990;58:1-12. doi: 10.1016/S0006-3495(90)82348-1. PubMed PMID: 2383626;
26. Tarek M. Membrane electroporation: a molecular dynamics simulation. *Biophysical journal*. 2005;88:4045-4053. doi: 10.1529/biophysj.104.050617.
27. Vernier PT, Levine ZA, Ho MC, et al. Picosecond and Terahertz Perturbation of Interfacial Water and Electropermeabilization of Biological Membranes. *Journal of Membrane Biology*. 2015;248:837-847. doi: 10.1007/s00232-015-9788-7. PubMed PMID: 25796485;
28. Yarmush ML, Golberg A, Serša G, et al. *Electroporation-Based Technologies for Medicine: Principles, Applications, and Challenges*. *Annual Review of Biomedical Engineering*. 2014;16:295-320. doi: 10.1146/annurev-bioeng-071813-104622. PubMed PMID: 24905876;
29. José A, Sobrevals L, Ivorra A, et al. Irreversible electroporation shows efficacy against pancreatic carcinoma without systemic toxicity in mouse models. *Cancer Letters*. 2012;317:16-23. doi: 10.1016/j.canlet.2011.11.004. PubMed PMID: 22079741;

30. Lee EW, Chen C, Prieto VE, et al. Advanced hepatic ablation technique for creating complete cell death: irreversible electroporation. *Radiology*. 2010;255:426-433. doi: 10.1148/radiol.10090337.
31. Choi YS, Kim HB, Chung J, et al. Preclinical Analysis of Irreversible Electroporation on Rat Liver Tissues Using a Microfabricated Electroporator. *Tissue engineering Part C, Methods*. 2010. doi: 10.1089/ten.TEC.2009.0803.
32. Siddiqui IA, Latouche EL, DeWitt MR, et al. Induction of rapid, reproducible hepatic ablations using next-generation, high frequency irreversible electroporation (H-FIRE) in vivo. *HPB*. 2016;18:726-734. doi: 10.1016/j.hpb.2016.06.015. PubMed PMID: 27593589;
33. Beebe SJ, Sain NM, Ren W. Induction of Cell Death Mechanisms and Apoptosis by Nanosecond Pulsed Electric Fields (nsPEFs). *Cells*. 2013;2:136-62. doi: 10.3390/cells2010136. PubMed PMID: 24709649;
34. Markelc B, Sersa G, Cemazar M. Differential Mechanisms Associated with Vascular Disrupting Action of Electrochemotherapy: Intravital Microscopy on the Level of Single Normal and Tumor Blood Vessels. *PLoS ONE*. 2013;8:e59557. doi: 10.1371/journal.pone.0059557. PubMed PMID: 23555705;
35. Ivorra A. Tissue Electroporation as a Bioelectric Phenomenon: Basic Concepts. In: Rubinsky B, editor. *Irreversible Electroporation*: Springer Berlin Heidelberg; 2010. p. 23-61
36. Faroja M, Ahmed M, Appelbaum L, et al. Irreversible electroporation ablation: is all the damage nonthermal? *Radiology*. 2013;266:462-470. doi: 10.1148/radiol.12120609/-/DC1. PubMed PMID: 23169795;
37. Davalos RV, Mir IL, Rubinsky B. Tissue ablation with irreversible electroporation. *Annals of Biomedical Engineering*. 2005;33:223-231.
38. Van Den Bos W, Scheffer HJ, Vogel JA, et al. Thermal Energy during Irreversible Electroporation and the Influence of Different Ablation Parameters. *Journal of Vascular and Interventional Radiology*. 2016;27:433-443. doi: 10.1016/j.jvir.2015.10.020. PubMed PMID: 26703782;
39. Chen C, Evans Ja, Robinson MP, et al. Electroporation of cells using EM induction of ac fields by a magnetic stimulator. *Physics in medicine and biology*. 2010;55:1219-29. doi: 10.1088/0031-9155/55/4/021. PubMed PMID: 20124654;
40. Novickij V, Dermal J, Grainys A, et al. Membrane permeabilization of mammalian cells using bursts of high magnetic field pulses. *PeerJ*. 2017;5:e3267. doi: 10.7717/peerj.3267.
41. Guo F, Yao C, Bajracharya C, et al. Simulation study of delivery of subnanosecond pulses to biological tissues with an impulse radiating antenna. *Bioelectromagnetics*. 2014;35:145-159. doi: 10.1002/bem.21825.
42. Dev SB, Dhar D, Krassowska W. Electric field of a six-needle array electrode used in drug and DNA delivery in vivo: analytical versus numerical solution. *IEEE transactions on bio-medical engineering*. 2003;50:1296-1300. doi: 10.1109/TBME.2003.818467.
43. Pavliha D, Kos B, Marčan M, et al. Planning of electroporation-based treatments using web-based treatment-planning software. *Journal of Membrane Biology*. 2013;246:833-842. doi: 10.1007/s00232-013-9567-2. PubMed PMID: 23780414;
44. Bertacchini C, Margotti PM, Bergamini E, et al. Irreversible Electroporation Systems for Clinical Use. In: Rubinsky B, editor. *Irreversible Electroporation*. Berlin, Heidelberg: Springer Berlin Heidelberg; 2010. p. 255-272
45. Jiang C, Davalos RV, Bischof JC. A review of basic to clinical studies of irreversible electroporation therapy. *IEEE Transactions on Biomedical Engineering*. 2015;62(1):4-20.

\*\*A must read publication which reviews the current applications of IRE from basic science to clinical studies.

46. Thiagalingam A, D'AVILA A, Foley L, et al. Importance of catheter contact force during irrigated radiofrequency ablation: evaluation in a porcine ex vivo model using a force-sensing catheter. *Journal of cardiovascular electrophysiology*. 2010;21(7):806-811.
47. Reddy VY, Shah D, Kautzner J, et al. The relationship between contact force and clinical outcome during radiofrequency catheter ablation of atrial fibrillation in the TOCCATA study. *Heart rhythm*. 2012;9(11):1789-1795.
48. Natale A, Reddy VY, Monir G, et al. Paroxysmal AF catheter ablation with a contact force sensing catheter: results of the prospective, multicenter SMART-AF trial. *Journal of the American College of Cardiology*. 2014;64(7):647-656.
49. Reddy VY, Dukkipati SR, Neuzil P, et al. A randomized controlled trial of the safety and effectiveness of a contact force sensing irrigated catheter for ablation of paroxysmal atrial fibrillation: Results of the TOCCASTAR study. *Circulation*. 2015:CIRCULATIONAHA.114.014092.
50. Pappone C, Oral H, Santinelli V, et al. Atrio-esophageal fistula as a complication of percutaneous transcatheter ablation of atrial fibrillation. *Circulation*. 2004;109(22):2724-2726.
51. Black-Maier E, Pokorney SD, Barnett AS, et al. Risk of atrioesophageal fistula formation with contact force-sensing catheters. *Heart Rhythm*. 2017 Sep;14(9):1328-1333. doi: 10.1016/j.hrthm.2017.04.024. PubMed PMID: 28416466; eng
52. Sacher F, Monahan KH, Thomas SP, et al. Phrenic nerve injury after atrial fibrillation catheter ablation: characterization and outcome in a multicenter study. *Journal of the American College of Cardiology*. 2006;47(12):2498-2503.
53. Park SY, Camilleri M, Packer D, et al. Upper gastrointestinal complications following ablation therapy for atrial fibrillation. *Neurogastroenterology and motility : the official journal of the European Gastrointestinal Motility Society*. 2017 May 19. doi: 10.1111/nmo.13109. PubMed PMID: 28524623; eng
54. Calkins H, Reynolds MR, Spector P, et al. Treatment of atrial fibrillation with anti-arrhythmic drugs or radio frequency ablation: two systematic literature reviews and meta-analyses. *Circulation: Arrhythmia and Electrophysiology*. 2009:CIRCEP.108.824789.
55. Khairy P, Chauvet P, Lehmann J, et al. Lower incidence of thrombus formation with cryoenergy versus radiofrequency catheter ablation. *Circulation*. 2003;107(15):2045-2050.
56. Medi C, Evered L, Silbert B, et al. Subtle post-procedural cognitive dysfunction after atrial fibrillation ablation. *J Am Coll Cardiol*. 2013 Aug 06;62(6):531-9. doi: 10.1016/j.jacc.2013.03.073. PubMed PMID: 23684686; eng
57. Vermeer SE, Prins ND, den Heijer T, et al. Silent brain infarcts and the risk of dementia and cognitive decline. *New England Journal of Medicine*. 2003;348(13):1215-1222.
58. Andrade JG, Dubuc M, Guerra PG, et al. The biophysics and biomechanics of cryoballoon ablation. *Pacing and Clinical Electrophysiology*. 2012;35(9):1162-1168.
59. Furnkranz A, Bordignon S, Bohmig M, et al. Reduced incidence of esophageal lesions by luminal esophageal temperature-guided second-generation cryoballoon ablation. *Heart Rhythm*. 2015 Feb;12(2):268-74. doi: 10.1016/j.hrthm.2014.10.033. PubMed PMID: 25446159; eng
60. Narui R, Tokuda M, Matsushima M, et al. Incidence and Factors Associated With the Occurrence of Pulmonary Vein Narrowing After Cryoballoon Ablation. *Circulation Arrhythmia and electrophysiology*. 2017 Jun;10(6). doi: 10.1161/circep.116.004588. PubMed PMID: 28630168; eng
61. Thomas D, Katus HA, Voss F. Asymptomatic pulmonary vein stenosis after cryoballoon catheter ablation of paroxysmal atrial fibrillation. *Journal of electrocardiology*. 2011 Jul-Aug;44(4):473-6. doi: 10.1016/j.jelectrocard.2010.09.007. PubMed PMID: 21146833; eng

62. Guiot A, Savoure A, Godin B, et al. Collateral nervous damages after cryoballoon pulmonary vein isolation. *Journal of cardiovascular electrophysiology*. 2012 Apr;23(4):346-51. doi: 10.1111/j.1540-8167.2011.02219.x. PubMed PMID: 22081875; eng
63. Ichihara N, Miyazaki S, Iwasawa J, et al. Prevalence and Pre-Procedural Predictors Associated With Right Phrenic Nerve Injury in Electromyography-Guided, Second-Generation Cryoballoon Ablation. *JACC: Clinical Electrophysiology*. 2016;2(4):508-514.
64. van Opstal JM, Timmermans C, Blaauw Y, et al. Bronchial erosion and hemoptysis after pulmonary vein isolation by cryoballoon ablation. *Heart Rhythm*. 2011 Sep;8(9):1459. doi: 10.1016/j.hrthm.2010.06.024. PubMed PMID: 20601153; eng
65. Aksu T, Ebru Golcuk S, Yalin K. Haemoptysis and pulmonary haemorrhage associated with cryoballoon ablation. *Europace*. 2015 Aug;17(8):1240. doi: 10.1093/europace/euu407. PubMed PMID: 25712979; eng
66. LIEM L, MEAD RH, Shenasa M, et al. Microwave catheter ablation using a clinical prototype system with a lateral firing antenna design. *Pacing and clinical electrophysiology*. 1998;21(4):714-721.
67. Nazer B, Gerstenfeld EP, Hata A, et al. Cardiovascular applications of therapeutic ultrasound. *Journal of interventional cardiac electrophysiology : an international journal of arrhythmias and pacing*. 2014 Apr;39(3):287-94. doi: 10.1007/s10840-013-9845-z. PubMed PMID: 24297498; PubMed Central PMCID: PMC5215834. eng
68. Koruth JS, Dukkipati S, Carrillo RG, et al. Safety and efficacy of high-intensity focused ultrasound atop coronary arteries during epicardial catheter ablation. *Journal of cardiovascular electrophysiology*. 2011 Nov;22(11):1274-80. doi: 10.1111/j.1540-8167.2011.02084.x. PubMed PMID: 21676047; eng
69. Nazer B, Salgaonkar V, Diederich CJ, et al. Epicardial Catheter Ablation Using High-Intensity Ultrasound: Validation in a Swine Model. *Circulation Arrhythmia and electrophysiology*. 2015 Dec;8(6):1491-7. doi: 10.1161/circep.115.003547. PubMed PMID: 26546345; eng
70. Neven K, Schmidt B, Metzner A, et al. Fatal end of a safety algorithm for pulmonary vein isolation with use of high-intensity focused ultrasound. *Circulation: Arrhythmia and Electrophysiology*. 2010:CIRCEP. 109.922930.
71. Reddy VY, Neuzil P, Themistoclakis S, et al. Visually-guided balloon catheter ablation of atrial fibrillation: experimental feasibility and first-in-human multicenter clinical outcome. *Circulation*. 2009 Jul 07;120(1):12-20. doi: 10.1161/circulationaha.108.840587. PubMed PMID: 19546385; eng
72. Dukkipati SR, Neuzil P, Kautzner J, et al. The durability of pulmonary vein isolation using the visually guided laser balloon catheter: multicenter results of pulmonary vein remapping studies. *Heart rhythm*. 2012;9(6):919-925.
73. Bordignon S, Boehmer MC, Klostermann A, et al. Visually guided pulmonary vein isolation in patients with persistent atrial fibrillation. *Europace*. 2016 Apr;18(4):538-42. doi: 10.1093/europace/euv208. PubMed PMID: 26316147; eng
74. Witt C, Livia C, Witt T, et al. Electroporative Myocardial Ablation Utilizing a Non-contact, Virtual Electrode: Proof of Concept in Ex-vivo and In-vivo Canine Hearts [Abstract; C-PO02-17]. *Heart Rhythm*. 2017;14(5):S144-S234. doi: 10.1016/j.hrthm.2017.04.005.
75. Neven K, van Driel V, van Wessel H, et al. Safety and feasibility of closed chest epicardial catheter ablation using electroporation. *Circulation: Arrhythmia and Electrophysiology*. 2014:CIRCEP. 114.001607.
76. Hong J, Stewart MT, Cheek DS, et al., editors. *Cardiac ablation via electroporation*. Engineering in Medicine and Biology Society, 2009. EMBC 2009. Annual International Conference of the IEEE; 2009: IEEE.



77. van Driel VJ, Neven K, van Wessel H, et al. Low vulnerability of the right phrenic nerve to electroporation ablation. *Heart Rhythm*. 2015;12(8):1838-1844.
78. Edd JF, Davalos RV. Mathematical modeling of irreversible electroporation for treatment planning. *Technology in cancer research & treatment*. 2007;6:275-86. doi: 10.1177/153303460700600403. PubMed PMID: 17668934;
79. Lavee J, Onik G, Mikus P, et al. A novel nonthermal energy source for surgical epicardial atrial ablation: irreversible electroporation. *The heart surgery forum*. 2007;10(2):E162-7. doi: 10.1532/hsf98.20061202. PubMed PMID: 17597044; eng

\*\* The first publication on cardiac electroporation in the literature.

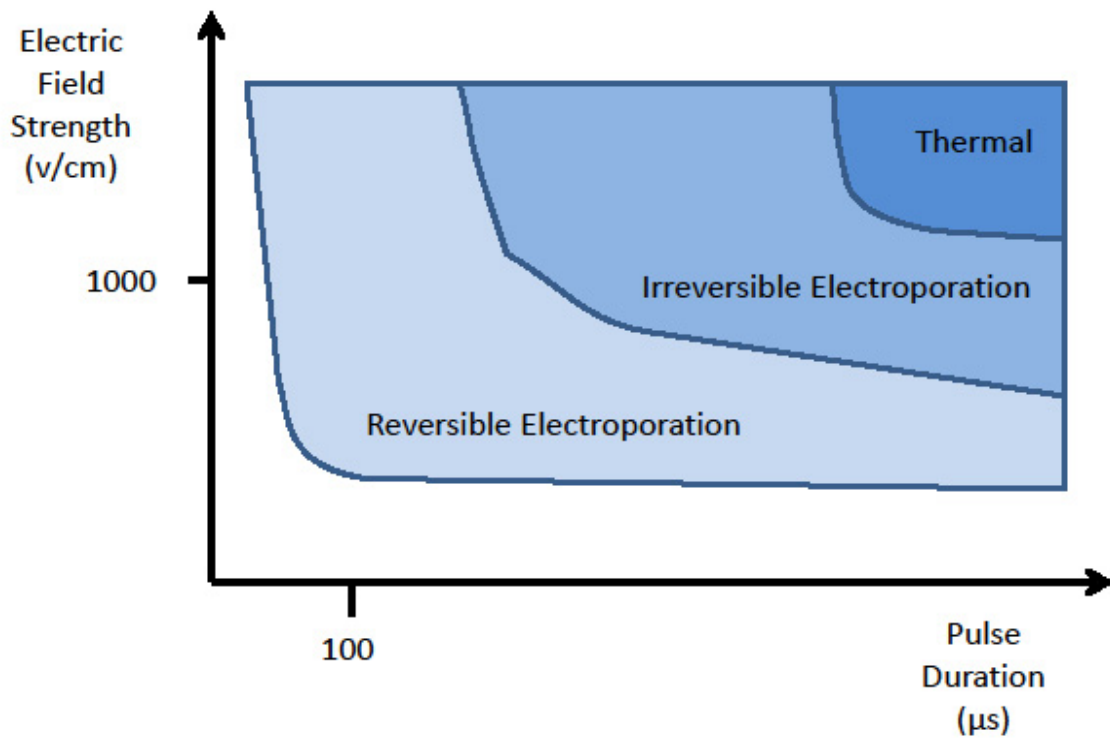
80. Wittkampfh FH, Van Driel VJ, Van Wessel H, et al. Feasibility of electroporation for the creation of pulmonary vein ostial lesions. *Journal of cardiovascular electrophysiology*. 2011;22(3):302-309.
81. van Driel VJ, Neven KG, van Wessel H, et al. Pulmonary vein stenosis after catheter ablation: electroporation versus radiofrequency. *Circulation: Arrhythmia and Electrophysiology*. 2014:CIRCEP. 113.001111.
82. DeSimone CV, Ebrille E, Syed FF, et al. Novel balloon catheter device with pacing, ablating, electroporation, and drug-eluting capabilities for atrial fibrillation treatment--preliminary efficacy and safety studies in a canine model. *Transl Res*. 2014 Dec;164(6):508-14. doi: 10.1016/j.trsl.2014.07.002. PubMed PMID: 25092516; PubMed Central PMCID: PMC4470560.
83. Wittkampfh FH, van Driel VJ, van Wessel H, et al. Myocardial lesion depth with circular electroporation ablation. *Circulation: Arrhythmia and Electrophysiology*. 2012:CIRCEP. 111.970079.
84. du Pré BC, van Driel VJ, van Wessel H, et al. Minimal coronary artery damage by myocardial electroporation ablation. *Europace*. 2012;15(1):144-149.
85. Zager Y, Kain D, Landa N, et al. Optimization of Irreversible Electroporation Protocols for In-vivo Myocardial Decellularization. *PloS one*. 2016;11(11):e0165475.
86. Witt C, Padmanabhan D, Killu A, et al. Successful Electroporation of the Pulmonary Veins in Canines Using a Balloon Catheter [Abstract; C-PO06-49] [Abstract]. *Heart Rhythm*. 2017;14(5):S514-S563. doi: 10.1016/j.hrthm.2017.04.005.
87. Kanjwal K, Yeasting R, Maloney JD, et al. Retro-cardiac esophageal mobility and deflection to prevent thermal injury during atrial fibrillation ablation: an anatomic feasibility study. *Journal of Interventional Cardiac Electrophysiology*. 2011;30(1):45-53.
88. Bahnsen TD. Strategies to Minimize the Risk of Esophageal Injury during Catheter Ablation for Atrial Fibrillation. *Pacing and Clinical Electrophysiology*. 2009;32(2):248-260.
89. Neven K, van Es R, van Driel V, et al. Acute and Long-Term Effects of Full-Power Electroporation Ablation Directly on the Porcine Esophagus. *Circulation: Arrhythmia and Electrophysiology*. 2017;10(5):e004672.
90. Onik G, Mikus P, Rubinsky B. Irreversible electroporation: implications for prostate ablation. *Technology in cancer research & treatment*. 2007;6(4):295-300.
91. Kamrani M, Shahryar R, Ashtiani M, et al. Effect of Electroporation on Sciatic Nerve of the Rat (A Primary Report on an Animal Study). *Iranian Journal of Orthopaedic Surgery*. 2014;12(3):103-110.
92. Schoellnast H, Monette S, Ezell PC, et al. The delayed effects of irreversible electroporation ablation on nerves. *European radiology*. 2013;23(2):375-380.
93. Schoellnast H, Monette S, Ezell PC, et al. Acute and subacute effects of irreversible electroporation on nerves: experimental study in a pig model. *Radiology*. 2011;260(2):421-427.

94. Li W, Fan Q, Ji Z, et al. The effects of irreversible electroporation (IRE) on nerves. *PLoS one*. 2011;6(4):e18831.
95. Lu Z, Scherlag BJ, Lin J, et al. Autonomic mechanism for initiation of rapid firing from atria and pulmonary veins: evidence by ablation of ganglionated plexi. *Cardiovasc Res*. 2009 Nov 01;84(2):245-52. doi: 10.1093/cvr/cvp194. PubMed PMID: 19520703; PubMed Central PMCID: PMC2764506.
96. Katriotis DG, Pokushalov E, Romanov A, et al. Autonomic denervation added to pulmonary vein isolation for paroxysmal atrial fibrillation: a randomized clinical trial. *J Am Coll Cardiol*. 2013 Dec 17;62(24):2318-25. doi: 10.1016/j.jacc.2013.06.053. PubMed PMID: 23973694;
97. Pokushalov E, Romanov A, Katriotis DG, et al. Ganglionated plexus ablation vs linear ablation in patients undergoing pulmonary vein isolation for persistent/long-standing persistent atrial fibrillation: a randomized comparison. *Heart Rhythm*. 2013 Sep;10(9):1280-6. doi: 10.1016/j.hrthm.2013.04.016. PubMed PMID: 23608592;
98. Driessen AH, Berger WR, Krul SP, et al. Ganglion Plexus Ablation in Advanced Atrial Fibrillation: The AFACT Study. *J Am Coll Cardiol*. 2016 Sep 13;68(11):1155-65. doi: 10.1016/j.jacc.2016.06.036. PubMed PMID: 27609676;
99. Oh S, Choi EK, Zhang Y, et al. Botulinum toxin injection in epicardial autonomic ganglia temporarily suppresses vagally mediated atrial fibrillation. *Circulation Arrhythmia and electrophysiology*. 2011 Aug;4(4):560-5. doi: 10.1161/CIRCEP.111.961854. PubMed PMID: 21659633;
100. Madhavan M, Venkatachalam K, Swale MJ, et al. Novel Percutaneous Epicardial Autonomic Modulation in the Canine for Atrial Fibrillation: Results of an Efficacy and Safety Study. *Pacing and Clinical Electrophysiology*. 2016;39(5):407-417.
101. Maor E, Ivorra A, Mitchell JJ, et al. Vascular smooth muscle cells ablation with endovascular nonthermal irreversible electroporation. *Journal of Vascular and Interventional Radiology*. 2010;21(11):1708-1715.
102. Maor E, Ivorra A, Rubinsky B. Non thermal irreversible electroporation: novel technology for vascular smooth muscle cells ablation. *PLoS one*. 2009;4(3):e4757.
103. Maor E, Ivorra A, Leor J, et al. The effect of irreversible electroporation on blood vessels. *Technology in cancer research & treatment*. 2007;6(4):307-312.
104. Maor E, Ivorra A, Leor J, et al. Irreversible electroporation attenuates neointimal formation after angioplasty. *IEEE Transactions on Biomedical Engineering*. 2008;55(9):2268-2274.
105. Nogami A, Sugiyasu A, Kubota S, et al. Mapping and ablation of idiopathic ventricular fibrillation from the Purkinje system. *Heart Rhythm*. 2005 Jun;2(6):646-9. doi: 10.1016/j.hrthm.2005.02.006. PubMed PMID: 15922276;
106. Haissaguerre M, Shoda M, Jais P, et al. Mapping and ablation of idiopathic ventricular fibrillation. *Circulation*. 2002 Aug 20;106(8):962-7. PubMed PMID: 12186801;
107. Santoro F, Di Biase L, Hranitzky P, et al. Ventricular fibrillation triggered by PVCs from papillary muscles: clinical features and ablation. *Journal of cardiovascular electrophysiology*. 2014 Nov;25(11):1158-64. doi: 10.1111/jce.12478. PubMed PMID: 24946987;
108. Livia C, Witt T, Polkinghorne M, et al. Electroporative Elimination of Purkinje Fibers Reduces Vulnerability to Ventricular Fibrillation [Abstract; C-PO04-139]. *Heart Rhythm*. 2017;14(5):S327-S417. doi: 10.1016/j.hrthm.2017.04.005, .
109. Asirvatham SJ. Cardiac Electroporation: The promise of the unknown. *Journal of cardiovascular electrophysiology*. 2018.
110. Neven K, van Driel V, van Wessel H, et al. Epicardial linear electroporation ablation and lesion size. *Heart Rhythm*. 2014 Aug;11(8):1465-70. doi: 10.1016/j.hrthm.2014.04.031. PubMed PMID: 24768609;

111. van den Bos W, Scheffer HJ, Vogel JA, et al. Thermal Energy during Irreversible Electroporation and the Influence of Different Ablation Parameters. *J Vasc Interv Radiol*. 2016 Mar;27(3):433-43. doi: 10.1016/j.jvir.2015.10.020. PubMed PMID: 26703782;
112. van Driel VJ, Neven KG, van Wessel H, et al. Pulmonary vein stenosis after catheter ablation: electroporation versus radiofrequency. *Circulation Arrhythmia and electrophysiology*. 2014 Aug;7(4):734-8. doi: 10.1161/CIRCEP.113.001111. PubMed PMID: 24958397;
113. Srimathveeravalli G, Wimmer T, Monette S, et al. Evaluation of an endorectal electrode for performing focused irreversible electroporation ablations in the swine rectum. *Journal of Vascular and Interventional Radiology*. 2013;24:1249-1256. doi: 10.1016/j.jvir.2013.04.025. PubMed PMID: 23796856;
114. High-frequency irreversible electroporation (H-FIRE) for non-thermal ablation without muscle contraction, (2011).
115. Miklavčič D, Pucihar G, Pavlovec M, et al. The effect of high frequency electric pulses on muscle contractions and antitumor efficiency in vivo for a potential use in clinical electrochemotherapy. *Bioelectrochemistry*. 2005;65:121-128. doi: DOI: 10.1016/j.bioelechem.2004.07.004.
116. Okino M, Tomie H, Kanesada H, et al. Optimal Electric Conditions in Electrical Impulse Chemotherapy. *Japanese Journal of Cancer Research*. 1992;83:1095-1101. doi: 10.1111/j.1349-7006.1992.tb02727.x. PubMed PMID: 1280635;
117. Haines DE, Watson DD. Tissue heating during radiofrequency catheter ablation: a thermodynamic model and observations in isolated perfused and superfused canine right ventricular free wall. *Pacing Clin Electrophysiol*. 1989 Jun;12(6):962-76. PubMed PMID: 2472624;
118. Davalos RV, Mir IL, Rubinsky B. Tissue ablation with irreversible electroporation. *Ann Biomed Eng*. 2005 Feb;33(2):223-31. PubMed PMID: 15771276;
119. Wittkamp FH, van Driel VJ, van Wessel H, et al. Myocardial lesion depth with circular electroporation ablation. *Circulation Arrhythmia and electrophysiology*. 2012 Jun 01;5(3):581-6. doi: 10.1161/CIRCEP.111.970079. PubMed PMID: 22492429;
120. Faroja M, Ahmed M, Appelbaum L, et al. Irreversible electroporation ablation: is all the damage nonthermal? *Radiology*. 2013 Feb;266(2):462-70. doi: 10.1148/radiol.12120609. PubMed PMID: 23169795;
121. van Gemert MJ, Wagstaff PG, de Bruin DM, et al. Irreversible electroporation: just another form of thermal therapy? *Prostate*. 2015 Feb 15;75(3):332-5. doi: 10.1002/pros.22913. PubMed PMID: 25327875; PubMed Central PMCID: PMC4305196.
122. Halbfass P, Pavlov B, Muller P, et al. Progression From Esophageal Thermal Asymptomatic Lesion to Perforation Complicating Atrial Fibrillation Ablation: A Single-Center Registry. *Circulation Arrhythmia and electrophysiology*. 2017 Aug;10(8). doi: 10.1161/CIRCEP.117.005233. PubMed PMID: 28798021;

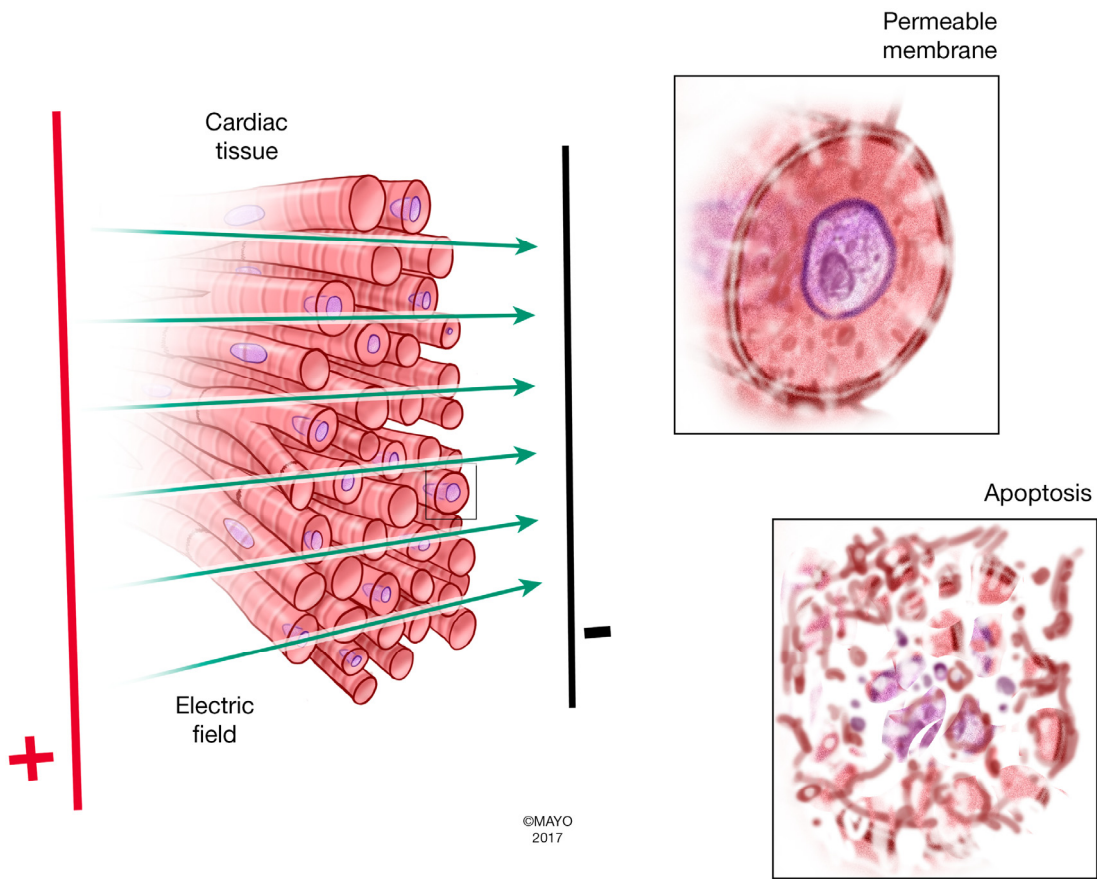
**Figure legends**

**Figure 1** – Depiction of the impact of pulse duration and electric field strength on the observed impact, ranging from reversible electroporation to irreversible electroporation to thermal damage. The longer the pulses and the greater the voltage, the more likely there will be irreversible damage and the possibility of thermal damage.

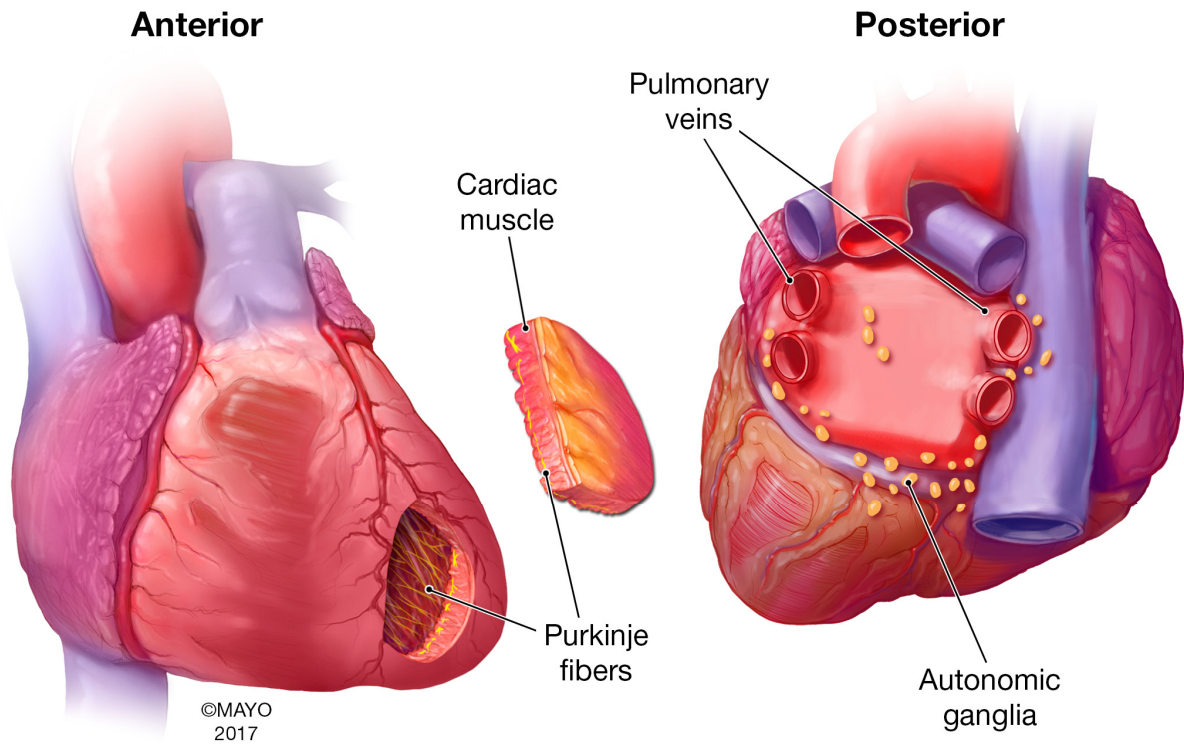


AC

Figure 2 - Irreversible cell death by apoptosis



**Figure 3** – To date, irreversible electroporation has been successfully applied to these areas of cardiac tissue.



**Table 1 – Comparison of Different Energy Sources for Ablation.**

	Radiofrequency	Cryothermal	Microwave	Ultrasound	Laser	Electroporation (DC energy)*
Contact	Dependent	Dependent	Independent	Independent	Dependent	Independent
Collateral damage	Yes	Yes	Yes	Yes	Yes	No
Esophagus	++	+	++	+++	++	-
Phrenic nerve	++	++	++	++	++	-
Vagal nerve	++	++	~	~	~	-
Coronary Artery	++	-	++	-	++	-
Thrombus	++	+	-	-	+++	-
Tissue Specificity	-	-	-	-	-	+++
Reversibility Potential	-	++	-	-	-	+++

~ Unknown at present

\*Based upon animal data published to date

Table 2 – Electroporation Targets and Limitations

---

Potential Cardiac Ablation Targets

- Atrial Fibrillation
- Ventricular Arrhythmias
- Ganglia
- Septum (for septal ablation)

Current Limitations

- Testing has been largely in preclinical models with limited human application
  - Ideal electrical field parameters still need to be examined
  - Method to reduce muscle contraction
  - Long term studies need to address safety and efficacy
-